



61(Delft/Chairman)2a

May 2005

INTERNATIONAL ELECTROTECHNICAL COMMISSION

**TECHNICAL COMMITTEE NO. 61: SAFETY OF
HOUSEHOLD AND SIMILAR ELECTRICAL APPLIANCES**

Report from the Chairman of TC 61

A. Inquiries

Since our last meeting, the CAG, Secretary and I have responded to inquiries from Argentina, Australia, Brazil, France (x 2), New Zealand. Details of these inquiries and the responses are given Annex A. You are invited to review the responses and either confirm or comment on them under agenda item 30 "Other business".

B. Letters from Brisbane.

Based on the discussions in Brisbane, the letters attached in Annex B were written. This item is intended for information only.

Annex A

Australia 1 (Delft)

I have received an inquiry concerning the application of Note 1 in clause 8.2 of Part 1.

The question asks: Clause 8.2 requires test probe 13 of IEC 61032 to be applied as per 8.1.1 in order to check compliance with the requirement in 8.2. Does Note 1 in 8.2 mean that the third paragraph of 8.1.1 is not applied i.e. the appliance is not tilted to check the 8.2 requirement.

DRAFT RESPONSE:

The third paragraph is applicable - Note 1 is intended to mirror the first paragraph of 8.1.1.

NOTE: Some CAG members confirmed this response while others were of the opinion that "The third paragraph was not applicable" Whatever response is confirmed, it appears as if we should clarify the test specification in 8.2 and make Note 1 into normative text in order to avoid any ambiguity.

Argentina 1 (Delft)

Hello again from Argentina. Here we are again looking for your advice regarding to the interpretation of some requirements within the IEC 60335 series.

Now, we are in the middle of some discussions at national level on how should be understood the following prescription of paragraph 8.1.1 of IEC 60335-1, when applied to a washing machine:

"Test probe B of IEC 61032 is applied without appreciable force, the appliance being in every possible position except that appliances normally used on the floor and having a mass exceeding 40 kg are not tilted."

The problem is how should be considered the 40 kg mass, attending that paragraph 8.1.1 begins with "The requirement of 8.1 applies for all positions of the appliance when it is operated as in normal use, and after the removal of detachable parts." and definition 3.1.9 in IEC 60335-2-7 says that in "normal operation" "The appliance is filled with textile material having a mass in the dry condition equal to the maximum mass stated in the instructions, and with the maximum quantity of water for which it is constructed."

If we follow the wording of the standard, it could be understood that the 40 kg mass refers to the mass of the washing machine when it is filled with textile material and water as in "normal operation".

However, from the point of view of the protection against access to live parts, the most unfavourable and practicable condition seems to be those arising from considering the 40 kg mass when the washing machine is empty.

Consequently, the question is how should be applied the standard at this point?

Should be considered the 40 kg mass as the one of the washing machine empty or as the total mass when the washing machine is loaded as in "normal operation"?

DRAFT RESPONSE:

To answer your question the weight of the appliance is taken when it is empty. Also you should note that "normal use" is not the same as "normal operation"

Brazil 1 (Delft)

We would like to know if you can explain us the IEC understanding to the terms (According IEC 60335-1 Annex O):

- Attended appliances
- Unattended appliances

DRAFT RESPONSE:

An attended appliance means an appliance that is operated always in the presence of the user. Conversely an unattended appliance is an appliance that may perform its function without the user being present during the operating cycle.

Whether an appliance is considered to be an attended or unattended type is stated in clause 30.2 in each part 2 of the 60335 series

France 1 (Delft)

The amendment 1 of IEC 60335-2-9 introduces the outdoor appliance requirements. This amendment should normally cover all outdoor appliances and especially barbecue for which all requirements of IEC 60335-2-78 have been rewritten in amendment 1.

My trouble is in notes 101 and 103 which include barbecues for indoor use only and exclude barbecues for outdoor use.

We have now an amendment which is intended to cover appliances for outdoor use and which excludes barbecues for outdoor use.

Does it mean that for barbecues intended for in and outdoor use we shall use IEC 60335-2-9 and IEC 60335-2-78 ??

Clarification is needed .

DRAFT RESPONSE:

You are correct - this matter was discussed at great length during the development of am 1 to part 2-9. It was agreed that it was completely covered by 4th paragraph of the introduction.

France 2 (Delft)

I am facing a problem concerning the application of sub clause 30.1 (ball pressure test) on a plastic material which is a kind of polystyrene foam with about 30 mm thickness.

The concerned appliance is a motor appliance and its enclosure is made of this foam. The thickness of the foam allows the appliance to be rigid enough to comply with all other clauses of the standard.

When applying the ball pressure test apparatus at 20°C on the foam, the diameter of the hole is more than 2 mm allowed. This test seems not suitable for this kind of plastic material, but we need to have a test to check the compliance of the material concerning the heat.

Do you have any suggestion ?

DRAFT RESPONSE:

If the enclosure deforms at 20 °C it is not meeting the intent of the standard, which is to prohibit enclosure materials that deform at any temperature lower than the BPT severity value.

New Zealand 1 (Delft)

I received the following enquiry relating to a tumble dryer motor run capacitor.

A 7 μF capacitor is used on a clothes dryer. This capacitor is approved to EN 60252 (Edition unknown). The applied RMS voltage is about 400V and the RMS current is between 0.5A and 1.0A.

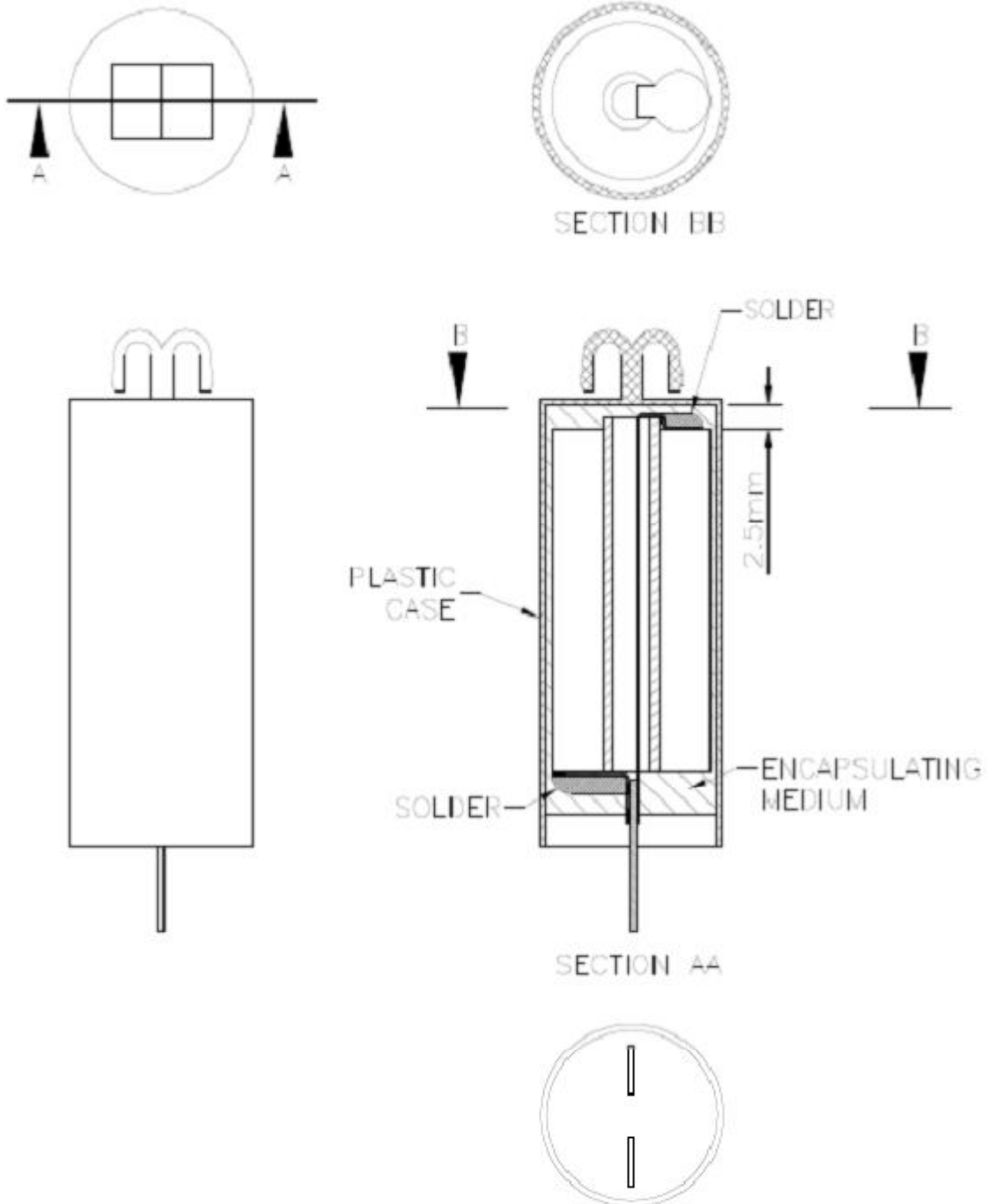
Its construction has a plastic outer casing with an epoxy 'top' through which the 2 'quick connect' terminals protrude. The drawing shows the general construction of foil 'spirals' with solder at each end to make the connection. The photograph is the capacitor end showing the foil and solder connection (the encapsulating compound has been removed).

The epoxy end passes the 750 °C GWT without ignition. However the plastic casing fails a 750 °C GWT.

The question is: Is it valid to test the plastic casing considering that the connections within the capacitor are fully sealed ?



Capacitor Photograph



Capacitor Construction

DRAFT RESPONSE:

If the connection is within 3 mm of insulation and carries > 0,2 A then the test must be carried out.

NOTE: Some CAG members confirmed this response while others were of the opinion that connections within the capacitor are not tested as they are covered by the capacitor standard. Whatever response is confirmed, we should consider if it is necessary to clarify the text of Note 1 in 24.1 and make Note 1 into normative text in order to avoid any ambiguity.

Annex B



Technical Committee 61
Safety of household and similar electrical appliances

INTERNATIONAL ELECTROTECHNICAL COMMISSION

Date: 20 November 2004

To: Secretaries and Chairmen of TC 61 Subcommittees

At its meeting in Brisbane, Australia 25 – 29 October 2004, TC 61 agreed to circulate to its subcommittees the following offer of help from TC 61/MT23.

MT23 is prepared to provide assistance in the implementation of the functional safety aspects of Amendment 1 to IEC 60335-1 and it is recommended that TC61 subcommittees submit any proposals to MT23 before circulating their proposals to national committees for comment.

IF you wish to take up this offer, please contact the Convenor or Secretary of TC 61/MT23 directly.

The contact details of the Convenor and Secretary of TC 61/MT23 are

Convenor: Mr Bernd Gehrke - bernd.gehrke@electrolux.de

Secretary: Mr Kazuo Shibata - kazuo_shibata@jema-net.or.jp

Regards

A handwritten signature in black ink that reads 'D. Johns'.

Derek Johns
Chairman IEC/TC 61

cc Mr A Brazauski, Secretary TC 61
Mr B Gehrke, Convenor TC 61/MT23
Mr K Shibata, Secretary TC 61/MT23



Technical Committee 61
Safety of household and similar electrical appliances

INTERNATIONAL ELECTROTECHNICAL COMMISSION

Date: 22 November 2004

To: Mr L Barling Chairman of SC 34A and Mr B Borchert Secretary SC 34 A

This is to advise that a DC that contains reference to the requirements for a UV emitter equivalency code that is being prepared by SC 34 A (34A/1060/DC) has been circulated for comment by TC 61. The comment received will be discussed by TC 61 at its meeting in Delft, Netherlands 9 – 13 May 2005.

The progress of the project relating to marking of the equivalency code on UV emitters has important safety implications for users of UV appliances. We hope that the work in SC 34A can proceed in parallel with that in TC 61 so that appropriate amendments to IEC 61228 and IEC 60335-2-27 can take place at approximately the same time. I expect that the amendment to IEC 60335-2-27 will be ready for publication late 2006 or early 2007.

We would welcome the participation of a representative from SC 34A in the discussion in Delft.

I attach a copy of 61/2785/DC for your information and SC34A comment if necessary.

Regards

A handwritten signature in cursive script that reads 'D. Johns'.

Derek Johns
Chairman IEC/TC 61

cc Mr A Brazauski, Secretary TC 61
Dr F Richarz, Convenor TC 61/MT16